

## Benesch Adds New Partners, Practice Group

Benesch welcomes partners Michael J. Melliere, Stephen P. Grassbaugh and Jason L. George and associates Susan Bender Price, Catherine M. Swartz and Allison M. Binkley to the firm. They will serve as core members of our new Public Finance Practice Group. The group will service clients in matters involving public works, infrastructure projects and bond issuances, and will offer our clients counsel in relation to the many government-initiated stimulus projects that are expected to arise in 2009. For more information, please visit [www.beneschlaw.com](http://www.beneschlaw.com).

### MY BENESCH MY TEAM



**Michael J. Melliere** has joined the firm as a partner and Chair of the Public Finance Practice Group. He serves as bond counsel, underwriter's counsel, letter of credit bank counsel, borrower's counsel, and issuer's counsel

on a variety of tax exempt financings for 501(c)(3) organizations, such as schools, nursing homes and long-term care facilities, hospitals, retirement housing communities, and cultural and recreational facilities. Mr. Melliere is also experienced in assisting faith-based organizations and schools in securing tax-exempt financing in states where schools can not otherwise utilize such financing due to constitutional impediments.

Mr. Melliere received his B.S. from Purdue University in 1988 and his J.D. from University of Michigan Law School in 1991.

[mmelliere@beneschlaw.com](mailto:mmelliere@beneschlaw.com) (614) 223-9331



**Stephen P. Grassbaugh** has joined the firm as a partner in the Public Finance Practice Group. Mr. Grassbaugh serves as bond counsel for political subdivisions, special counsel on economic development matters,

underwriter counsel for investment banking firms, and special counsel on matters including Ohio ethics laws, annexation, intergovernmental agreements, state and federal loans and grants, and constitutional and public law issues. His client base of political subdivisions includes the State of Ohio, county agencies and departments, municipalities, townships, school districts, port authorities, metropolitan park districts and conservancy districts.

Mr. Grassbaugh received both his B.A. and B.S. from The Ohio State University in 1973 and his J.D. from Case Western Reserve University in 1984.

[sgrassbaugh@beneschlaw.com](mailto:sgrassbaugh@beneschlaw.com) (614) 223-9327



**Jason L. George** has joined the firm as a partner in the Public Finance Practice Group. Mr. George focuses his practice on conduit financing, including serving as bond counsel, underwriter's counsel, issuer's counsel, borrower's counsel,

bank counsel and derivative counsel for a client base which includes acute and long-term care facilities, industrial developers and multi-family housing developers. He is also experienced in handling 501(c)(3) and energy-related financings.

Mr. George received his B.A. from DePauw University in 1995 and his J.D. from Indiana University School of Law—Bloomington in 1998.

[jgeorge@beneschlaw.com](mailto:jgeorge@beneschlaw.com) (614) 223-9311



**Susan Bender Price** serves as bond counsel and underwriter's counsel for taxable and tax-exempt financings, and focuses her practice on education, health-care and senior living transactions. She is experienced in managing all

aspects of complex, multi-million dollar tax-exempt financing transactions. In connection with such transactions, Ms. Price performs intensive contract review, drafts documentation, prepares resolutions, coordinates issuer and borrower board meetings and presents resolutions at such board meetings. In addition, she is well-versed in all aspects of documentation and tax analysis of conduit financings.

Ms. Price received her B.A. cum laude from DePauw University in 1999 and her J.D. from University of Cincinnati College of Law in 2002.

[sprice@beneschlaw.com](mailto:sprice@beneschlaw.com) (614) 223-9377

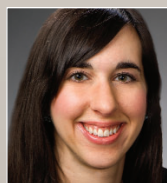


**Catherine M. Swartz** focuses her practice on serving as bond counsel in general obligation and revenue bond financings for Ohio cities, counties, school districts and villages. She assists her school district clients in matters

regarding the classroom facilities assistance program, tax levies, construction, competitive bidding, purchase, sale and lease of real property and other school law matters. Ms. Swartz drafts continuing disclosure filings for political subdivisions, advises counties regarding implementing sales and use taxes, and researches counties' acquisitions and financings of real property.

Ms. Swartz received her J.D. with honors from The Ohio State University, Moritz College of Law in 2002, and her B.A. magna cum laude from the College of Wooster in 1998.

[cswartz@beneschlaw.com](mailto:cswartz@beneschlaw.com) (216) 363-4546



**Allison M. Binkley** focuses her practice on conduit financings, leasing transactions and traditional bond work. She serves as bond counsel and underwriter's counsel for financings including 501(c)(3) and health care financings. Her client base

includes health care organizations, private schools and traditional government issuers. Ms. Binkley handles the drafting of bond documents, offering statements, swap documents and closing documents. She also performs in-depth research and memorandum writing of various bond and tax law issues.

Ms. Binkley received her J.D. from The Ohio State University, Moritz College of Law in 2007. She received an M.A. in Economics from The Ohio State University in 2000 and her B.A. cum laude from Grove City College in 1999.

[abinkley@beneschlaw.com](mailto:abinkley@beneschlaw.com) (614) 223-9376