

inside Benesch

MY BENESCH
MY TEAM

E-NEWS AND EVENTS FROM BENESCH FRIEDLANDER COPLAN & ARONOFF LLP

November 2011



Columbus office Partner-in-Charge Thomas C. Washbush (seated) signs Benesch's pledge. Also present, (left to right) Kurt Tunnell, Chair, Managing Partners Diversity Initiative, David S. Bloomfield, Columbus Bar Association President and Jill Snitcher McQuain, Columbus Bar Association Executive Director.

Benesch Signs on with Columbus Bar Association's Diversity Initiative

Benesch, along with 25 other organizations from the legal community, recently pledged a five-year commitment with the Columbus Bar Association (CBA) to increase the number of attorneys of color recruited, hired and promoted in the central Ohio area.

"The CBA is proud of its history as a leader in the Managing Partners Diversity Initiative," said David Bloomfield, Jr., president of the CBA.

"Though we recognize that we have much to accomplish, the Diversity Initiative has been a success in increasing the number of attorneys of color practicing in firms in Columbus. With the signing of the new plan, the CBA will continue to partner with member firms, bar associations and law schools to create a diverse community of lawyers."

Through the program, the legal community has experienced a positive change of open dialogue concerning the recruitment and retention of minority talent in law firms. Stakeholders are provided the opportunity to critically analyze the successes and struggles of diversity programming. The initiative also creates a discipline that supports the focus of promoting diversity on a day-to-day basis.

Abrams Named 2014 President of Indianapolis Bar Association



Jeffrey A. Abrams

Jeffrey A. Abrams has been selected as the 2014 President of the Indianapolis Bar Association (IBA). Currently serving as IBA's Treasurer, Jeff will serve as 1st Vice President on IBA's 2012 Board of Directors and President-elect in 2013.

Jeff is Partner-in-Charge of Benesch's Indianapolis office and a member of the firm's Real Estate & Environmental Practice Group. He represents banks and lending institutions, developers, landlords, tenants, builders, contractors and all types of business owners. Jeff has represented companies and lenders in documenting different types of transactions, including acquisition and development of land, shopping centers, office and industrial buildings, acquisition of businesses, development loans, construction loans and leases for various property types.

Gutmacher Named *Best Lawyers*® 2012 Real Estate Law Lawyer of the Year



Norman W. Gutmacher

Norman W. Gutmacher has been named by *Best Lawyers*® as the "2012 Lawyer of the Year – Real Estate Law – Cleveland."

Best Lawyers designates "Lawyers of the Year" in high-profile legal specialties in large legal communities. Only a single lawyer in each specialty in each community is being honored as the "Lawyer of the Year." *Best Lawyers* compiles its lists of outstanding attorneys by conducting peer-review surveys in which thousands of leading lawyers confidentially evaluate their professional peers.

Norm is a partner with Benesch's Real Estate & Environmental Practice Group. He focuses his practice on commercial real estate matters, particularly commercial leasing, loan restructuring, loan workouts, foreclosures, commercial development, acquisitions and divestitures, commercial financing, energy (wind farms and oil and gas leases) and AIA contract matters. His practice is national in scope, often representing national chains and franchisees.

Canny Receives Affiliate Member Award from Indiana State Bar Association



Cathy D. Canny and Jeffrey A. Lind

Cathy D. Canny received the Affiliate Member Award from the Indiana State Bar Association (ISBA), recognizing her continued contributions to the legal profession. The award was presented at ISBA's annual meeting on October 20, 2011. With more than 12,000 members, ISBA serves and advocates on behalf of its members, their clients and the public interest as the independent voice of the legal profession.

Cathy is a paralegal in Benesch's Litigation and Business Reorganization Practice Groups. With over 32 years of paralegal experience, Cathy's main concentration is large, complex litigation and Chapter 11 bankruptcy cases.

New Attorneys

Cleveland



Julie R. Fenstermaker

Associate, Intellectual Property Practice Group
(216) 363-4466

jfenstermaker@beneschlaw.com

B.A. *Bowling Green State University*

J.D. *The Ohio State University*

Julie R. Fenstermaker Julie focuses her practice on trademark and copyright matters, including all aspects of domestic and international trademark prosecution and copyright registration. She regularly counsels clients on the selection, clearance and adoption of trademarks, the preparation of copyright and trademark applications, the prosecution of those applications through to registration, and post-registration maintenance.



Michael J. Meyer

Associate, General Practice Group
(216) 363-4439

mmeyer@beneschlaw.com

B.A. *Ohio Northern University*

M.B.A. *The University of Toledo*

J.D. *Cleveland State University, Cleveland-Marshall College of Law*

Mike's legal experience includes researching transactional and litigation issues; assisting in the preparation for civil litigation including drafting briefs, motions, and other pleadings; and assisting with various stages of business transactions including negotiations and mergers and acquisitions.



W. Clifford Mull

Associate, Health Care Practice Group
(216) 363-4198

cmull@beneschlaw.com

B.A. *DePauw University*

M.A. *Case Western Reserve University*

J.D. *Case Western Reserve University School of Law*

Cliff's practice focuses on advising physicians and health care, life sciences, pharmaceutical and device businesses on regulatory, business and intellectual property issues. He has represented physicians, limited licensed practitioners, physician and multi-specialty group practices, ambulatory surgery centers, durable medical equipment suppliers, medical device manufacturers and distributors, hospice agencies, pharmacies and other ancillary service providers.



LaVonne E. Pulliam

Associate, General Practice Group
(216) 363-4507

lpulliam@beneschlaw.com

B.A. *Case Western Reserve University*

M.A. *Case Western Reserve University School of Medicine*

J.D. *Case Western Reserve University Law School*

LaVonne's legal experience includes researching transactional and litigation issues, assisting in the preparation for civil litigation and business transactions and evaluating health care regulatory issues.



John J. Thuermer

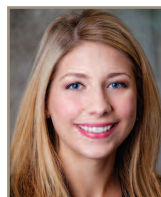
Associate, General Practice Group
(216) 363-4541

jthuermer@beneschlaw.com

B.A. and B.S. *Case Western Reserve University*

J.D. *The University of Akron School of Law*

John J. Thuermer John's legal experience includes assisting with patent litigation, patent prosecution and various trademark matters. Additionally, he has worked on intellectual property matters involving chemical, mechanical and biomedical device technology.



Megan C. Zaidan

Associate, General Practice Group
(216) 363-4443

mzaidan@beneschlaw.com

B.S. *Kent State University*

J.D. *The George Washington University Law School*

Megan C. Zaidan Megan has experience in commercial real estate acquisitions and dispositions as well as retail leasing. Additionally, she has experience conducting research in areas including commercial litigation and real estate transactions, and otherwise assisting in real estate and business transactions.

Indianapolis



Kelly J. Greene

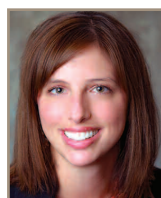
Associate, Health Care Practice Group
(317) 685-6105

kgreene@beneschlaw.com

B.S. *Ball State University*

J.D. *Indiana University School of Law – Indianapolis*

Kelly J. Greene Kelly advises health care providers in various industries regarding state and federal regulatory and compliance matters related to the Anti-Kickback Statute, Stark Law and HIPAA. While Kelly represents a broad range of health care providers, she has in-depth experience in the representation of long-term care providers, specifically with regard to licensure, surveys, compliance matters, and fraud and abuse investigations.



Courtney L. Kanzinger

Associate, General Practice Group
(317) 685-6118

ckanzinger@beneschlaw.com

B.S. *Purdue University*

J.D. *Indiana University School of Law – Indianapolis*

Courtney L. Kanzinger Prior to joining Benesch, Courtney worked as an assistant paralegal at The Pedcor Companies, a real estate development group based in Carmel, Indiana, and as an operations analyst for Morgan Stanley in Purchase, New York.

Caring for Our Communities

Again in 2011, Benesch continued its support for the United Way. Throughout September, Benesch employees actively supported the cause by participating in raffles, pledge card drawings, jeans days and a spaghetti lunch.

Benesch employees also participated in two of the United Way Days of Caring opportunities in greater Cleveland: one at Merrick House and one at Bishop Cosgrove Center. At Merrick House, a "home" for hundreds of people each year, volunteers worked with the children in the daycare center on arts and crafts and played games with them. At Bishop Cosgrove Center, a daytime drop-in center that offers hot meals, shower facilities and basic needs assistance, volunteers provided landscaping services.

Events

Defending Against the Latest Claims From the Plaintiffs' Bar Against Brokers, Carriers, and Manufacturers and Analyzing Fault Apportionment

Marc S. Blubaugh

American Conference Institute's 2nd National Forum on Defending and Managing Trucking Litigation

December 5, 2011 | Orlando, FL

Financing Commercial Property Acquisitions Handling Real Estate Transactions with Confidence

Jeffrey A. Abrams

National Business Institute: Handling Real Estate Transactions with Confidence

December 5, 2011 | Indianapolis, IN

Step-by-Step Through The Purchase Agreement and The Closing

Norman R. Newman

National Business Institute: Handling Real Estate Transactions with Confidence

December 5, 2011 | Indianapolis, IN

Corporate Governance Developments

Douglas E. Haas

SEC Hot Topics Institute

December 8, 2011 | Cleveland, OH

Wage and Hour Update

Mark R. Waterfill

ICLEF: 2011 Recent Developments in Employment Law

December 9, 2011 | Indianapolis, IN

Tax Issues in Bankruptcy

Samuel D. Hodson, Jon B. Abels and Wendy D. Brewer

Indiana Continuing Legal Education Forum: Annual Bankruptcy Institute

December 15, 2011 | Indianapolis, IN

Bankruptcy Court Jurisdiction and Related Issues

David H. Kleiman

Indiana Continuing Legal Education Forum: Annual Bankruptcy Institute

December 15, 2011 | Indianapolis, IN

Transportation and Logistics

Moderator: Marc S. Blubaugh

Columbus Roundtable of the Council of Supply Chain Management Professionals

January 13, 2012 | Columbus, OH

Gilman Reappointed Co-Chair of the Class Actions Subcommittee of the American Bar Association's Litigation Section's Commercial and Business Litigation Committee



Jeremy Gilman

Jeremy Gilman has been reappointed Co-Chair of the Class Actions Subcommittee of the American Bar Association's Litigation Section's Commercial and Business Litigation Committee. The

Litigation Section is the largest specialty section of the American Bar Association.

Jeremy is a partner with Benesch's Litigation Practice Group. His practice encompasses a wide range of complex business cases, including: class actions; directors and officers litigation; fraud and business tort litigation; securities litigation; real estate, environmental and toxic tort litigation; commercial and bankruptcy litigation; and health care and administrative litigation.

Benesch Offers Ohio HR Law Blog

"Ohio HR Law" is a blog maintained by the members of Benesch's Labor & Employment Practice Group. This blog offers timely updates on the latest happenings in labor, workplace and human resources law in the state of Ohio and beyond.

The attorneys authoring the content for "Ohio HR Law" provide a full range of labor and employment legal services to clients. From counseling clients on daily employment issues to handling the most complex of litigation, our Labor & Employment Practice Group has the experience in minimizing the risks inherent in today's workplace.

Please click [here](#) to check out "Ohio HR Law."



Friend us on Facebook:

<http://facebook.com/benesch.friedlander>



Follow us on Twitter:

twitter.com/BeneschLaw